



# Certificate of Analysis

QA SAMPLE - INFORMATIONAL ONLY

1 of 3

ICAL ID: 20230314-005  
Sample: CA230314-007-016  
ISO roller  
Strain: ISO roller  
Category: Topical  
Type: Other

Silver Shadow Ventures LLC  
Lic. #  
N/a  
San Diego, CA 92121  
Lic. #

Batch#: S-231-3-23-1  
Batch Size Collected:  
Total Batch Size:  
Collected: 03/15/2023; Received: 03/15/2023  
Completed: 03/15/2023

Moisture NT Water Activity NT	Δ9-THC ND	CBD 1,699.65 mg/unit	Total Cannabinoids 1,707.80 mg/unit	Total Terpenes NT
--	--------------	-------------------------	--	----------------------

## Summary

Batch  
Cannabinoids

SOP Used

POT-PREP-005

Date Tested

03/14/2023

Complete  
Complete



Scan to see results

## Cannabinoid Profile

1 Unit = container, 91.57 g.

Analyte	LOQ (mg/g)	LOD (mg/g)	%	mg/g	mg/unit	Analyte	LOQ (mg/g)	LOD (mg/g)	%	mg/g	mg/unit
THCa	0.0481	0.0160	ND	ND	ND	CBGa	0.0414	0.0100	ND	ND	ND
Δ9-THC	0.0414	0.0122	ND	ND	ND	CBG	0.0414	0.0056	ND	ND	ND
Δ8-THC	0.0414	0.0066	ND	ND	ND	CBN	0.0414	0.0089	ND	ND	ND
THCV	0.0414	0.0053	ND	ND	ND	Total THC			ND	ND	ND
CBDa	0.0532	0.0177	ND	ND	ND	Total CBD			1.86	18.56	1699.65
CBD	0.0414	0.0055	1.856	18.56	1699.65	Total			1.87	18.65	1707.80
CBDV	0.0414	0.0062	0.009	0.09	8.15						
CBC	0.0425	0.0142	ND	ND	ND						

Total THC=THCa \* 0.877 + d9-THC + d8-THC; Total CBD = CBDa \* 0.877 + CBD. LOD= Limit of Detection, LOQ= Limit of Quantitation, ND= Not Detected, NR= Not Reported. Potency is reported on a dry weight basis. Instrumentation and analysis SOPs used: Cannabinoids:UHPLC-DAD(POT-INST-005),Moisture:Moisture Analyzer(MOISTURE-001),Water Activity:Water Activity Meter(WA-INST-002), Foreign Material:Microscope(FOREIGN-001). Density measured at 19-24 °C, Water Activity measured at 0-90% RH. All QA submitted by the client, All CA State Compliance sampled using SAMPL-SOP-001.

## Terpene Profile

Analyte	LOQ (mg/g)	LOD (mg/g)	%	mg/g	Analyte	LOQ (mg/g)	LOD (mg/g)	%	mg/g
---------	------------	------------	---	------	---------	------------	------------	---	------

NR= Not Reported (no analysis was performed), ND= Not Detected (the concentration is less than the Limit of Detection (LOD)). Analytical instrumentation used: HS-GC-MS; samples analyzed according to SOP TERP-INST-003.



Infinite Chemical Analysis Labs  
8312 Miramar Mall  
San Diego, CA  
(858) 623-2740  
www.infiniteCAL.com  
Lic# C8-0000047-LIC

*Josh M Swider*

Josh Swider  
Lab Director, Managing Partner  
03/15/2023

Confident Cannabis  
All Rights Reserved  
support@confidentcannabis.com  
(866) 506-5866  
www.confidentcannabis.com



This product has been tested by Infinite Chemical Analysis, LLC using valid testing methodologies and a quality system as required by state law. All LQC samples were performed and met the prescribed acceptance criteria in 16 CCR section 15730, pursuant to 16 CCR section 15726(e)(13). Values reported relate only to the product tested. Infinite Chemical Analysis, LLC makes no claims as to the efficacy, safety or other risks associated with any detected or non-detected levels of any compounds reported herein. This Certificate shall not be reproduced except in full, without the written approval of Infinite Chemical Analysis, LLC.



# Certificate of Analysis

QA SAMPLE - INFORMATIONAL ONLY

2 of 3

ICAL ID: 20230314-005  
Sample: CA230314-007-016  
ISO roller  
Strain: ISO roller  
Category: Topical  
Type: Other

Silver Shadow Ventures LLC  
Lic. #  
N/a  
San Diego, CA 92121  
Lic. #

Batch#: S-231-3-23-1  
Batch Size Collected:  
Total Batch Size:  
Collected: 03/15/2023; Received: 03/15/2023  
Completed: 03/15/2023

## Residual Solvent Analysis

Category 1	LOQ	LOD	Limit	Status	Category 2	LOQ	LOD	Limit	Status	Category 2	LOQ	LOD	Limit	Status
------------	-----	-----	-------	--------	------------	-----	-----	-------	--------	------------	-----	-----	-------	--------

NR= Not Reported (no analysis was performed), ND= Not Detected (the concentration is less than the Limit of Detection (LOD)). Analytical instrumentation used: HS-GC-MS; samples analyzed according to SOP RS-INST-003.

## Heavy Metal Screening

LOQ	LOD	Limit	Status
-----	-----	-------	--------

NR= Not Reported (no analysis was performed), ND= Not Detected (the concentration is less than the Limit of Detection (LOD)). Analytical instrumentation used: ICP-MS; samples analyzed according to SOP HM-INST-003.

## Microbiological Screening

Limit	Result	Status
-------	--------	--------

ND=Not Detected. Analytical instrumentation used:qPCR; samples analyzed according to SOP MICRO-INST-001.



Infinite Chemical Analysis Labs  
8312 Miramar Mall  
San Diego, CA  
(858) 623-2740  
www.infiniteCAL.com  
Lic# C8-0000047-LIC

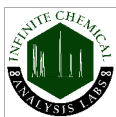
*Josh M Swider*

Josh Swider  
Lab Director, Managing Partner  
03/15/2023

Confident Cannabis  
All Rights Reserved  
support@confidentcannabis.com  
(866) 506-5866  
www.confidentcannabis.com



This product has been tested by Infinite Chemical Analysis, LLC using valid testing methodologies and a quality system as required by state law. All LQC samples were performed and met the prescribed acceptance criteria in 16 CCR section 15730, pursuant to 16 CCR section 15726(e)(13). Values reported relate only to the product tested. Infinite Chemical Analysis, LLC makes no claims as to the efficacy, safety or other risks associated with any detected or non-detected levels of any compounds reported herein. This Certificate shall not be reproduced except in full, without the written approval of Infinite Chemical Analysis, LLC.



# Certificate of Analysis

QA SAMPLE - INFORMATIONAL ONLY

3 of 3

ICAL ID: 20230314-005  
Sample: CA230314-007-016  
ISO roller  
Strain: ISO roller  
Category: Topical  
Type: Other

Silver Shadow Ventures LLC  
Lic. #  
N/a  
San Diego, CA 92121  
Lic. #

Batch#: S-231-3-23-1  
Batch Size Collected:  
Total Batch Size:  
Collected: 03/15/2023; Received: 03/15/2023  
Completed: 03/15/2023

## Chemical Residue Screening

Category 1	LOQ	LOD	Status	Mycotoxins	LOQ	LOD	Limit	Status
------------	-----	-----	--------	------------	-----	-----	-------	--------

Category 2	LOQ	LOD	Limit	Status	Category 2	LOQ	LOD	Limit	Status
------------	-----	-----	-------	--------	------------	-----	-----	-------	--------

## Other Analyte(s):

NR= Not Reported (no analysis was performed), ND= Not Detected (the concentration is less than the Limit of Detection (LOD)). Analytical instrumentation used: LC-MS-MS & GC-MS-MS; samples analyzed according to SOPs PESTMYCO-LC-INST-004 and PEST-GC-INST-003.



Infinite Chemical Analysis Labs  
8312 Miramar Mall  
San Diego, CA  
(858) 623-2740  
www.infiniteCAL.com  
Lic# C8-0000047-LIC

*Josh M Swider*

Josh Swider  
Lab Director, Managing Partner  
03/15/2023

Confident Cannabis  
All Rights Reserved  
support@confidentcannabis.com  
(866) 506-5866  
www.confidentcannabis.com



This product has been tested by Infinite Chemical Analysis, LLC using valid testing methodologies and a quality system as required by state law. All LQC samples were performed and met the prescribed acceptance criteria in 16 CCR section 15730, pursuant to 16 CCR section 15726(e)(13). Values reported relate only to the product tested. Infinite Chemical Analysis, LLC makes no claims as to the efficacy, safety or other risks associated with any detected or non-detected levels of any compounds reported herein. This Certificate shall not be reproduced except in full, without the written approval of Infinite Chemical Analysis, LLC.